

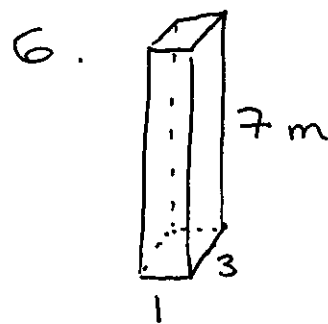
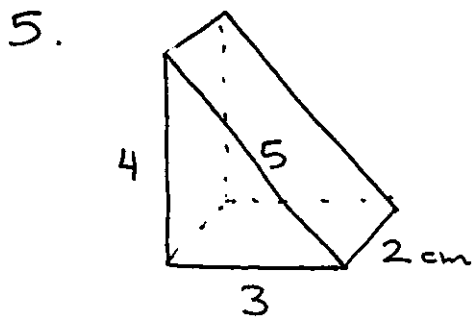
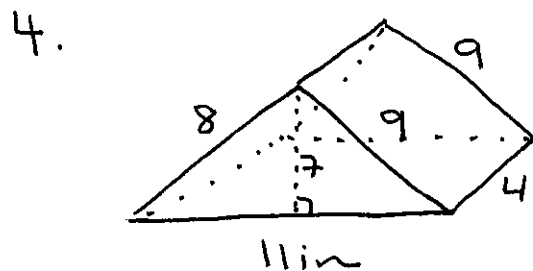
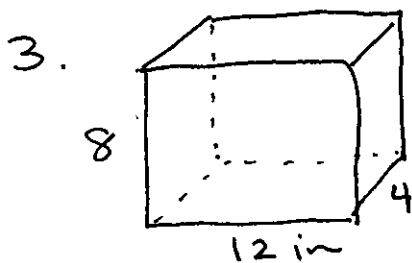
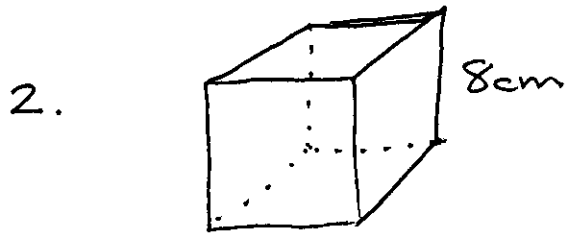
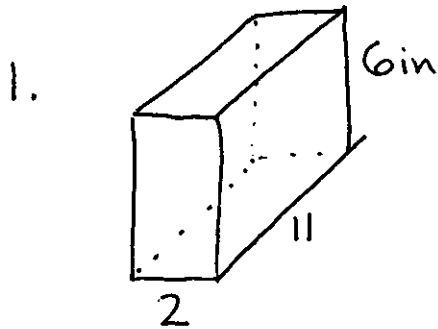
Geometry Unit

Lesson 2 + 3

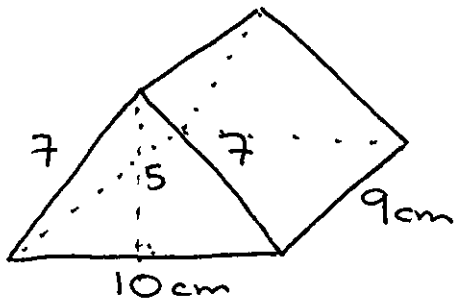
practice packet

* Answer Key on *
wikispace

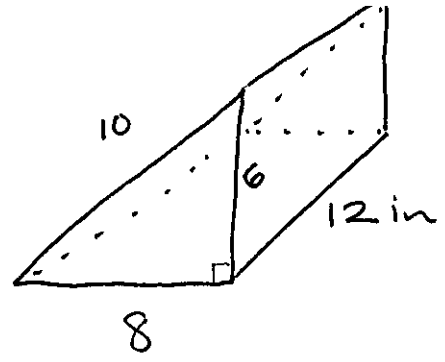
For each prism find the Surface Area and the Volume.



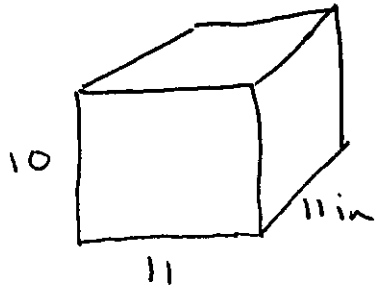
7.



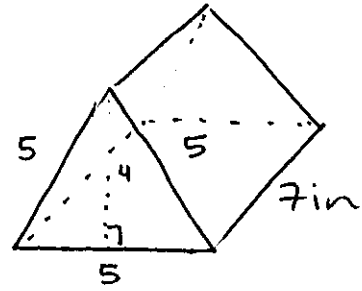
8.



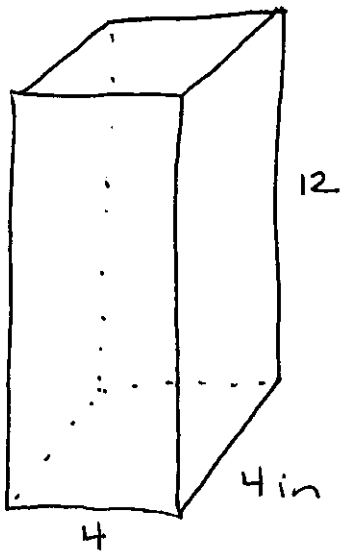
9.



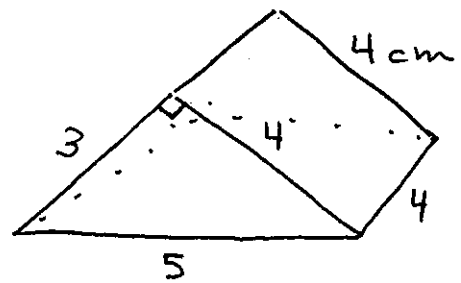
10.



11.



12.



1. $SA = 200 \text{ in}^2$
 $V = 132 \text{ in}^3$

2. $SA = 384 \text{ cm}^2$
 $V = 512 \text{ cm}^3$

3. $SA = 352 \text{ in}^2$
 $V = 384 \text{ in}^3$

4. $SA = 189 \text{ in}^2$
 $V = 154 \text{ in}^3$

5. $SA = 36 \text{ cm}^2$
 $V = 12 \text{ cm}^3$

6. $SA = 62 \text{ m}^2$
 $V = 21 \text{ m}^3$

7. $SA = 266 \text{ cm}^2$
 $V = 225 \text{ cm}^3$

8. $SA = 336 \text{ in}^2$
 $V = 288 \text{ in}^3$

9. $SA = 682 \text{ in}^2$
 $V = 1210 \text{ in}^3$

10. $SA = 125 \text{ in}^2$
 $V = 70 \text{ in}^3$

11. $SA = 160 \text{ in}^2$
 $V = 192 \text{ in}^3$

12. $SA = 60 \text{ cm}^2$
 $V = 24 \text{ cm}^3$